

Clinicals Practice Placement Unit (CPPU) Responsibilities & Collaborations

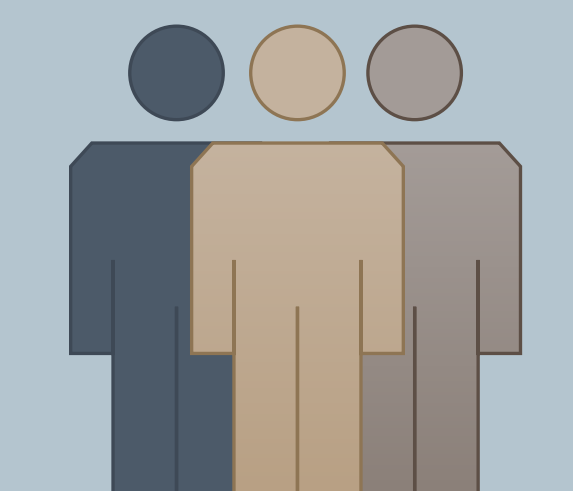
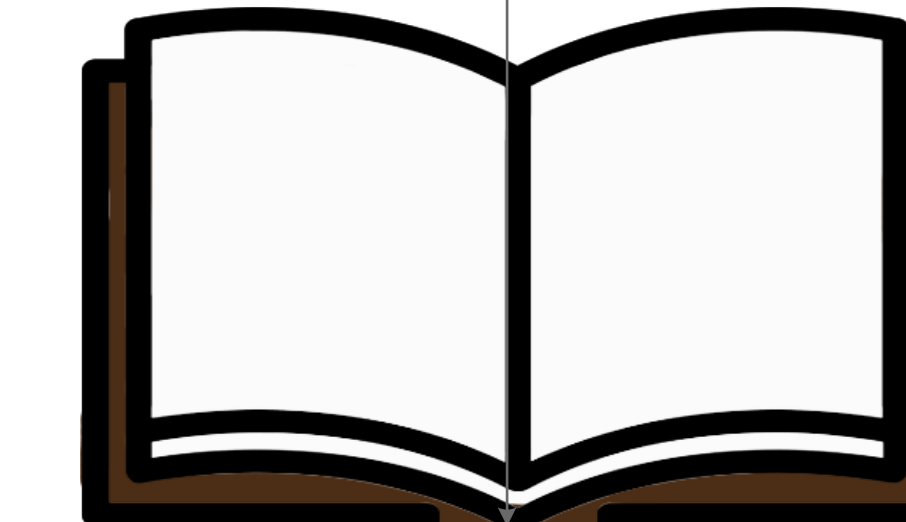
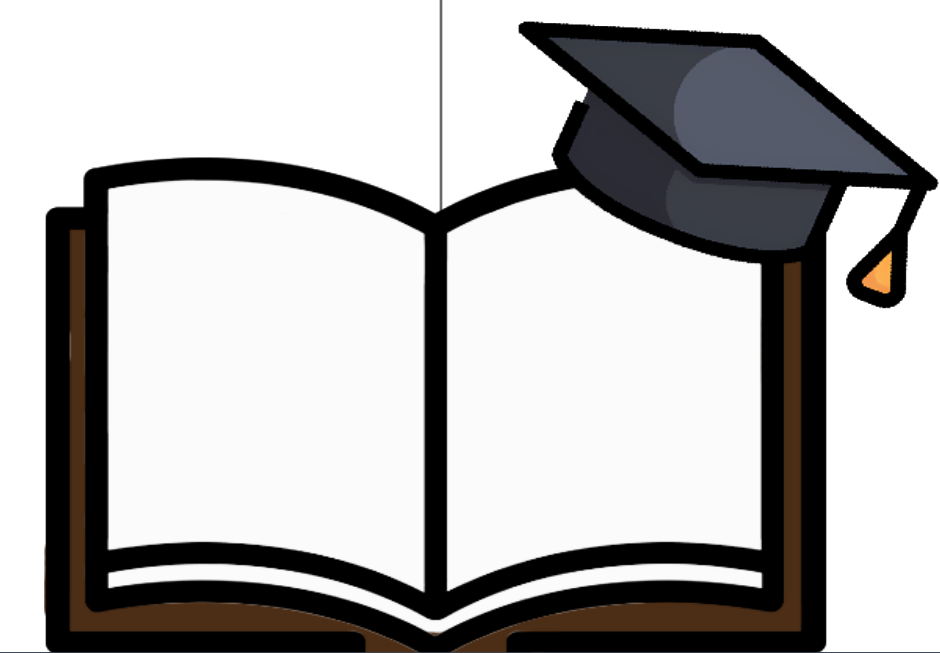
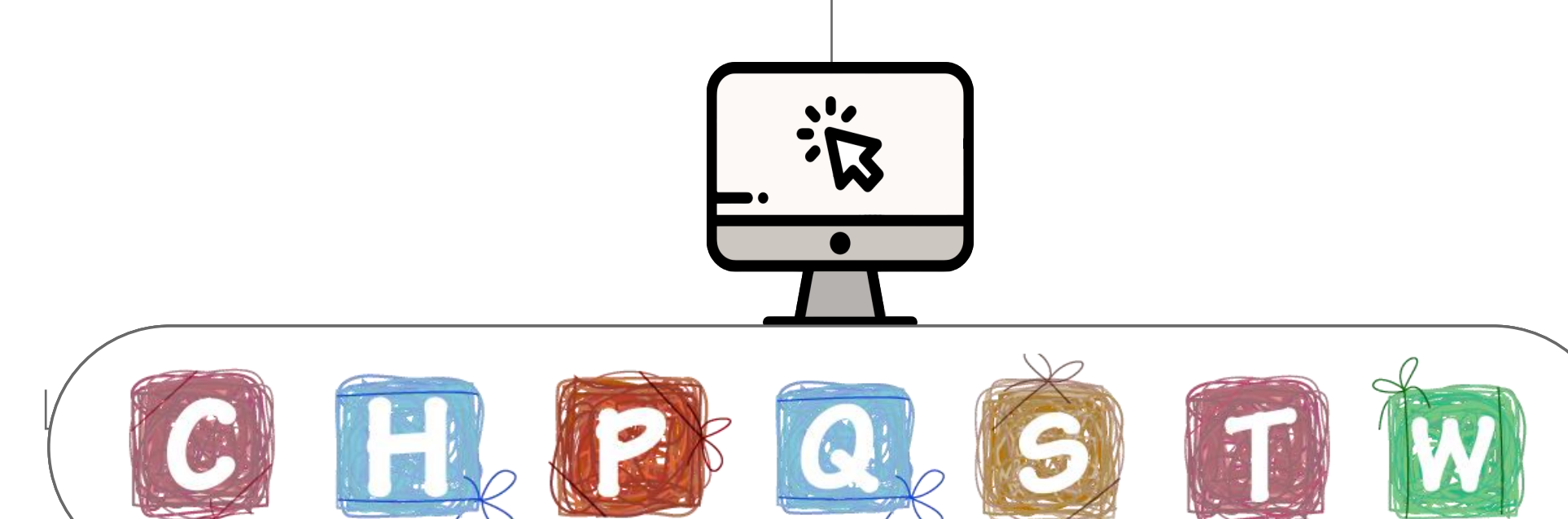
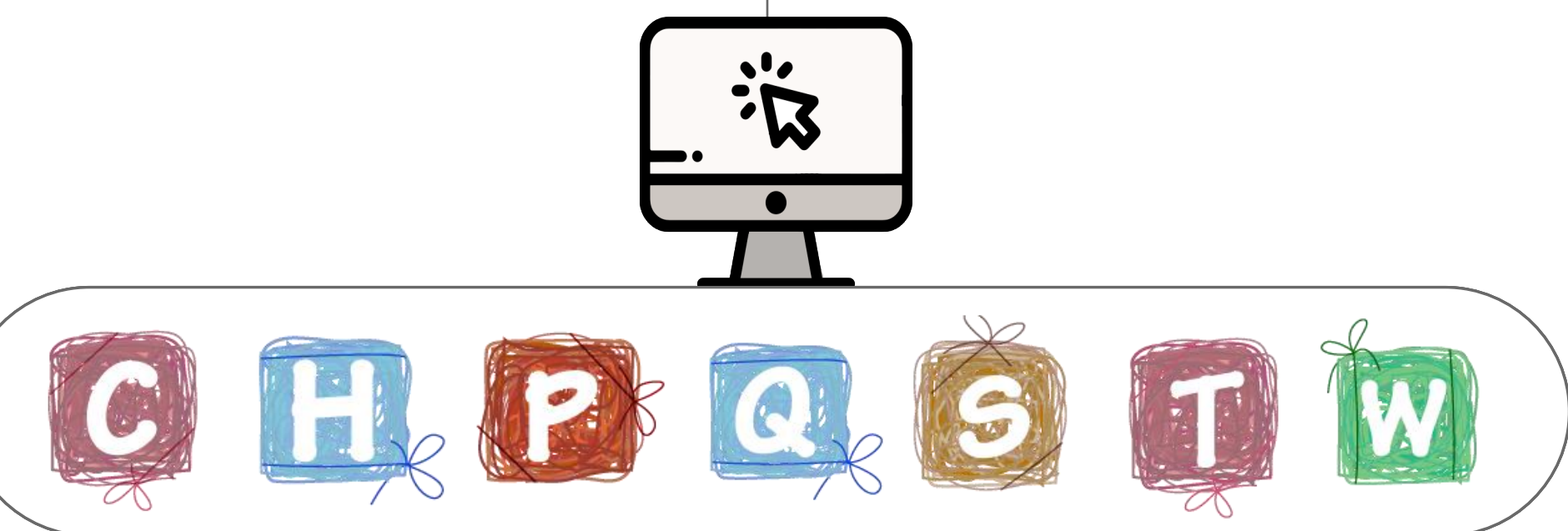

CPPU Manager


Placement Administrative Assistant


Graduate Placement Coordinator

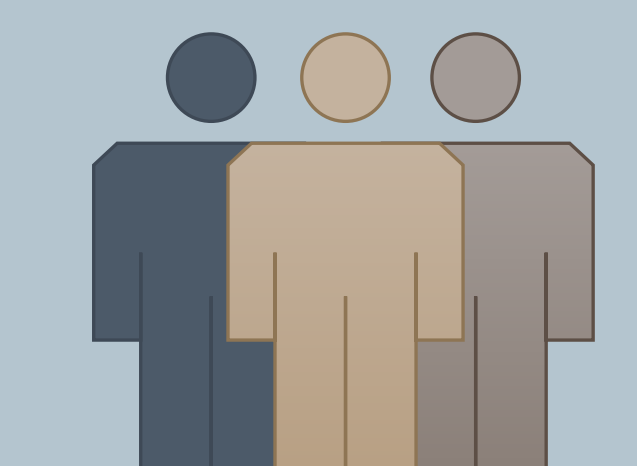

Undergraduate Placement Coordinator


Practice Education Coordinator



Jointly with

UBC Legal & Safety Risk Services



HR / Finance

Graduate Program

- . Student Placement Agreements
- . Placement Prerequisites
- . HSPnet Placement Negotiation
- . Nurse Interschool (NIS)
- . PCN/MD/HA Student Placements
- . Placement Assignments
- . Preceptor Recruitment
- . Preceptor Honoraria Payments
- . MSN and MHLP Placement Organization
- . Placement Requests (HSPnet)

Master of Science in Nursing

- . MSc. Nurse Practitioner (MN-NP)
- . MSc. Clinical Nurse Specialist (CNS)
- . MSc. Health Leadership & Policy (MHLP)
- . Primary Care Networks (PCN)
- . Student Placement Agreement Updates
- . Graduate Nurse Interschool (NIS)

Undergraduate Program

- . HSPnet and Practice Placement Negotiations
- . Placement Assignments and Requests (HSPnet)
- . Student Practice Information Sessions
- . Student Practice Education Core Orientation (SPECO)
- . Practice Prerequisite Management
- . Master Class Placement Sheet (MCPS)
- . Provincial Violence Prevention (PVP) Training
- . BC Provincial Practice Education Guidelines (PEGs)
- . Nurse Interschool (NIS)
- . 4th Year Renewals

- . Student Practice Affiliation Agreements (SPA)

- . NPE Recruiting
- . FTE Calculations/Verification
- . NPE Contracts
- . NPE HR Onboarding
- . NPE Orientation and Support
- . Professional Development Sessions
- . Parking and Management Reimbursement

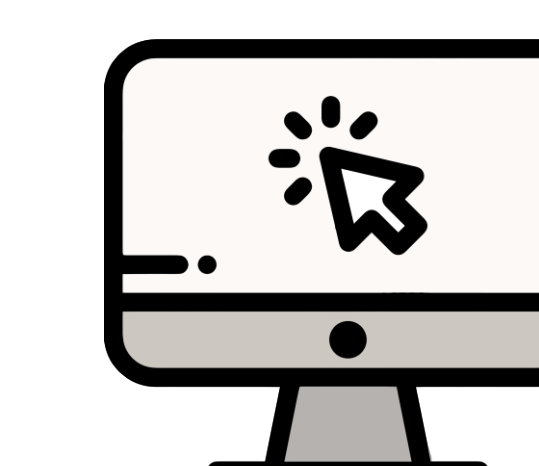
Collaboratively with

UBC Student Services

- . New Student Admissions
- . Program Prerequisites
- . SHS Immunization Renewals
- . Criminal Record Checks (CRC)
- . ESN (LOGS/BCE NM Form 10.1)
- . Out of Sync (OOS) Student Management
- . NPE Evaluations
- . Practice Photo Sheets

Practice Partners

- . Provincial Health Services Authority (PHSA)
- . Vancouver Coastal Health Authority (VCHA)
- . Fraser Health Authority (FHA)
- . Providence Health Care (PHC)
- . Community Practice Partners
- . Vancouver Island Health Authority (VIHA)
- . Northern Health Authority (NHA)
- . Interior Health Authority (IHA)
- . Out of Province Practice Partners



Systems



Canvas Document Shell



HSPnet



PebblePad



Qualtrics



SharePoint



TeamShare



Workday (HR & Student)



CARE 2.0 (Canvas)